

B1016: OFFICE BLOCK TYPE 2 BUILDING INSTRUCTIONS

Introduction

This model is of a 1950s-style office block. It is designed to complement the Hangar Type 2 (model B1008) and can be used to join two of the hangars together, or be fitted at the side. Alternatively it can be used as a stand-alone building.

General Notes

Read the general building instructions, and then these instructions, before commencing construction.

The diagrams always show the unprinted side of the card in grey.

Main Walls

Fold down the tabs on each end of both side walls (see Fig 1).

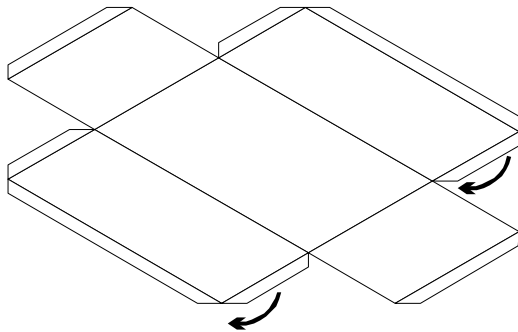


Fig 1 – Folding Tabs on Side Walls

Fold down the two side walls (see Fig 2).

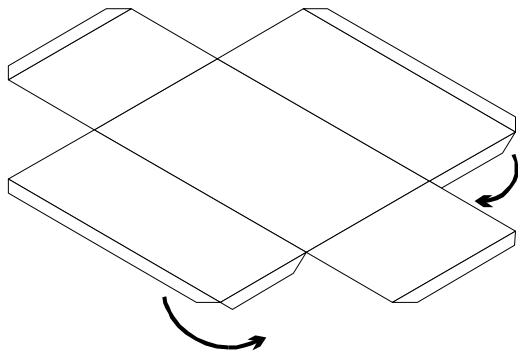


Fig 2 – Folding Side Walls

Fold down one end wall. Apply glue to one of the side wall tabs and glue it behind the end wall (see Fig 3). Press the tab behind the wall until the glue is dry.

Apply glue to the other tab and fit it behind the end wall in a similar manner.

Ensure that the walls are square and meet neatly in the corners.

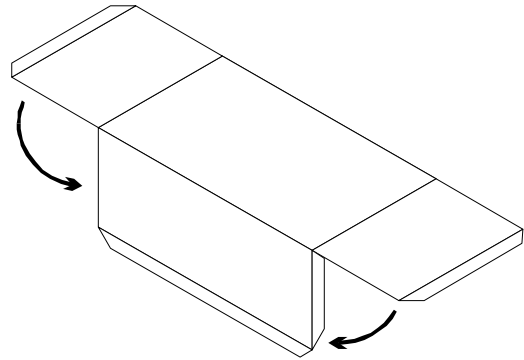


Fig 3 – Fitting End Walls

Fold down and glue the other end wall in the same way.

Wall Supports

The wall supports help to make the side walls more rigid. They can be omitted if preferred.

Fold and glue two wall supports so that they form triangular columns (see Fig 4).

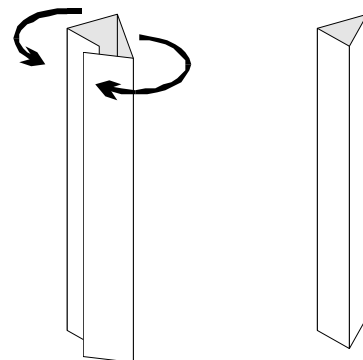


Fig 4 – Folding Ends of Sloping-Roofed Cabin

Turn the main building on its side and glue one of the wall supports against the inside of the side wall (see Fig 5). Apply the glue sparingly so that the card does not buckle.

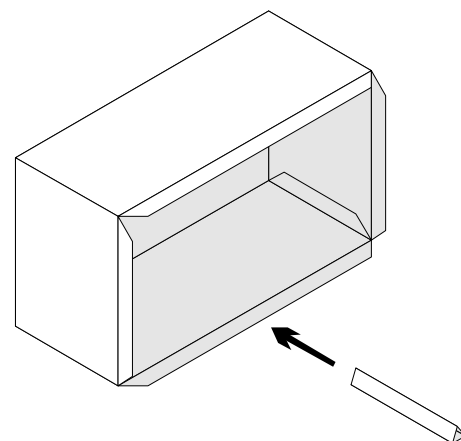


Fig 5 – Fitting the Wall Supports

Make sure that the support is straight and fitted up to the roof (see Fig 6).

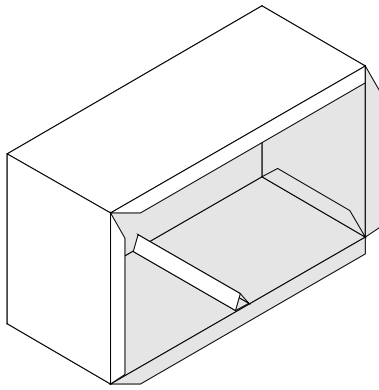


Fig 6 – Wall Supports Fitted

Fit the second wall support on the other side in a similar manner.

Fold the tab along the bottom edge of each wall inwards (these tabs can be used to fit the model to a baseboard). Turn the model on its base.

The finished office block should appear as shown in Fig 7.

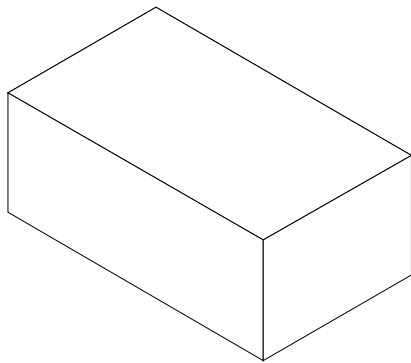


Fig 7 – Completed Model